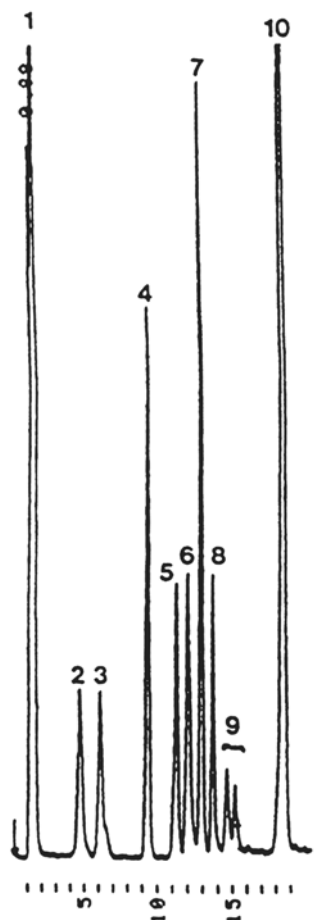


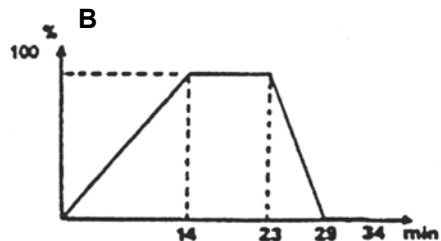
SEDEX Low Temperature Evaporative Light Scattering Detector

SAMPLE: PHOSPHOLIPIDS

HPLC
Gradient



1. Apolar lipids
2. CR : cerebroside – fatty acid not hydroxylated
3. CROH: cerebroside – fatty acid hydroxylated
4. PE : phosphatidyl ethanolamine
5. PI : phosphatidyl inositol
6. PS : phosphatidyl serine
7. PC : phosphatidyl choline
8. PA : phosphatidyl acid
9. Sph : sphingomyeline
10. LPC : lysophosphatidyl choline



Gradient Profile

CONDITIONS

Column	<i>Lichrospher Si 60 - 5 μm 125 x 4 mm</i>
Injected Volume	<i>10 μl (injected quantity 3 μg)</i>
Eluent	<i>A: CHCl₃/MeOH/H₂O/ 30 % NH₃ (60/34/5.5/0.5) B: CHCl₃/MeOH/30 % NH₃ (80/19.5/0.5)</i>
Flow Rate	<i>1 ml/min</i>
Pressure	<i>2.2 bars</i>
Gas	<i>Air</i>
Temperature	<i>50° C</i>

Analyzed By : Mr. Becart, Parfums C. Dior [J. High Res. Chrom. 13, (1990) 126]

S.E.D.E.R.E.

PARC VOLTA - BP 27

9, rue Parmentier

94141 Alfortville Cedex FRANCE

Application #5