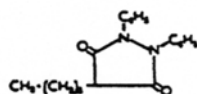


# SEDEX Low Temperature Evaporative Light Scattering Detector

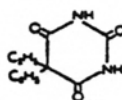
## SAMPLE: DRUGS

SFC

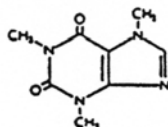
1: Phenylbutazone



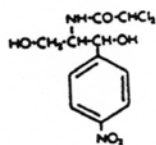
2: Phenobarbital



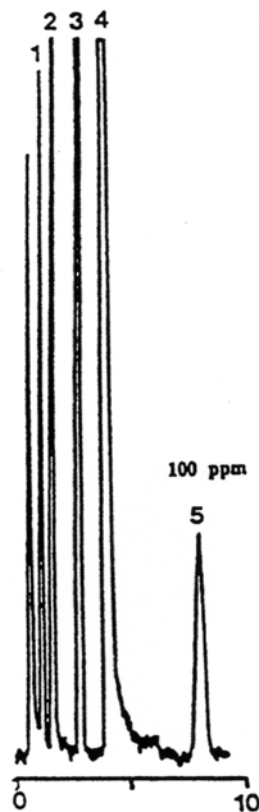
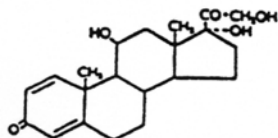
3: Caffeine



4: Chloramphenicol



5: Prednisolone



### CONDITIONS

|             |                                      |
|-------------|--------------------------------------|
| Column      | Zorbax TMS 7 $\mu$ m<br>250 x 4.6 mm |
| Eluent      | CO <sub>2</sub> /MeOH (89.3/10.7)    |
| Flow Rate   | 4.6 ml/min                           |
| Pressure    | 3000 psi                             |
| Temperature | Detector: 40° C, Column : 40° C      |

Analyzed By : LCBA 45100 Orleans FRANCE