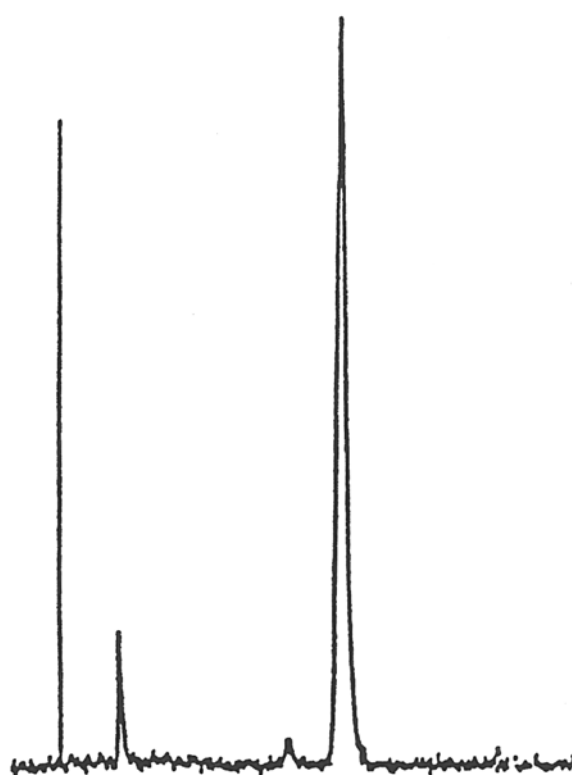
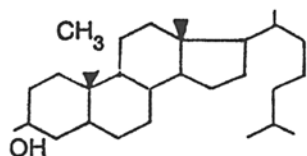


# SEDEX Low Temperature Evaporative Light Scattering Detector

**SAMPLE: CHOLESTEROL**

**HPLC**



## CONDITIONS

Column	<i>Zorbax ODS 250 x 4.6 mm</i>
Injected Volume	<i>20 µl, Injected Quantity 1 µg</i>
Eluent	<i>Methanol</i>
Flow Rate	<i>1.5 ml/min</i>
Pressure	<i>2.5 bar</i>
Gas	<i>Helium</i>
Temperature	<i>40° C</i>