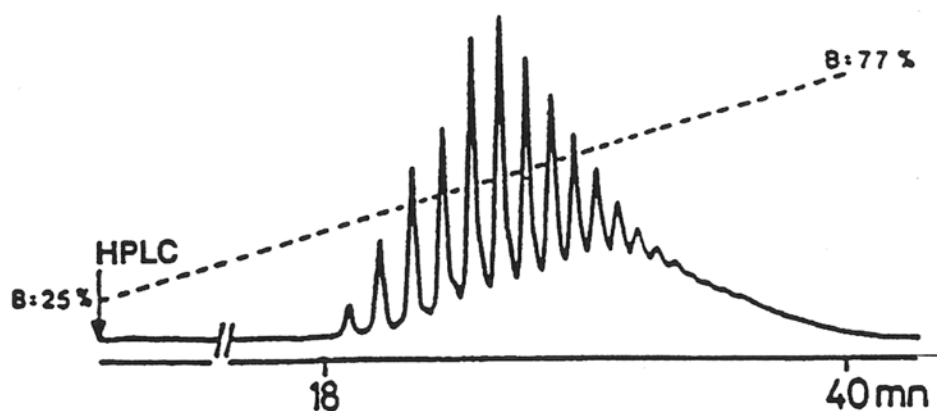


# SEDEX Low Temperature Evaporative Light Scattering Detector

SAMPLE: PARAFILM

HPLC  
Gradient



Gradient: 25 to 77% B in 40 min

## CONDITIONS

Column	<i>Zorbax ODS</i> <i>250 x 4.6 mm</i>
Injected Volume	<i>20 µl</i>
Eluent	<i>A: Methanol</i> <i>B: Methylene Chloride</i>
Flow Rate	<i>1.5 ml/min</i>
Pressure	<i>2.5 bars</i>
Gas	<i>Nitrogen</i>
Temperature	<i>35° C</i>

Analyzed by : LCBA 45100 Orleans FRANCE [J. Chromatogr.404 (1987) 95]