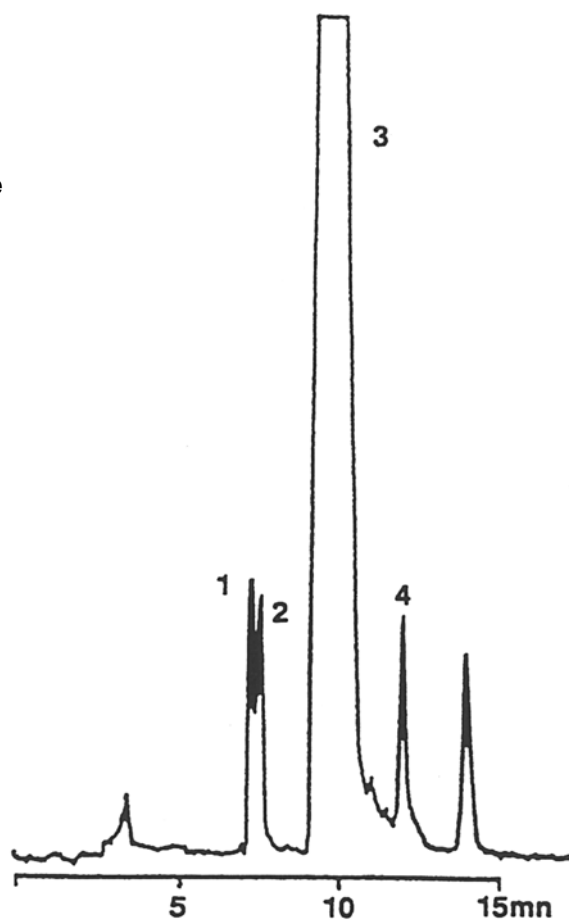


SEDEX Low Temperature Evaporative Light Scattering Detector

SAMPLE: SUGARS (FROM SUGAR BEETS)

HPLC

- 1: Glucose
- 2: Fructose
- 3: Sucrose
- 4: Raffinose



CONDITIONS

Column	<i>Zorbax ODS - 7 μm</i> <i>250 x 9 mm</i>
Injected Volume	<i>20 μl</i>
Eluent	<i>Water</i>
Flow Rate	<i>1.5 ml/min</i>
Pressure	<i>2.2 bars</i>
Gas	<i>Air</i>
Temperature	<i>40° C</i>

Analyzed by : LCBA 45100 Orleans FRANCE [Analysis 15 No.4 (1987) XLV]

S.E.D.E.R.E.
PARC VOLTA - BP 27
9, rue Parmentier
94141 Alfortville Cedex FRANCE

Application #45