

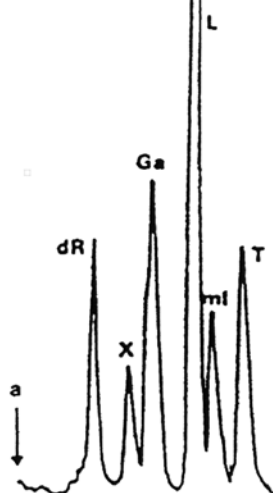
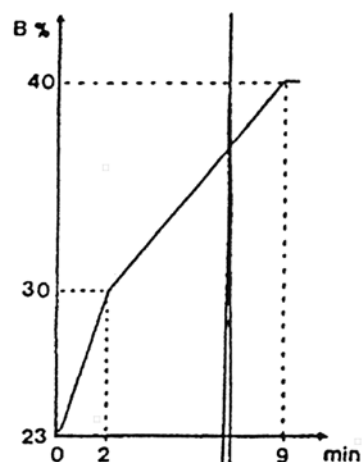
# SEDEX Low Temperature Evaporative Light Scattering Detector

**SAMPLE: MONO, DI, TRISACCHARIDES (R-GI)**

**HPLC**  
Gradient

## Peaks

dR: Deoxyribose  
Rh: Rhamnose  
F: Fructose  
G: Glucose  
S: Sucrose  
R: Raffinose



Gradient: Methanol 23 to 30%, 0 – 2 min.  
30 to 40%, 2 – 9 min.

## CONDITIONS

Column	<i>Lichrospher Diol</i> 250 x 4 mm
Eluent	A: CH <sub>2</sub> CH <sub>2</sub> B: Methanol
Flow Rate	1.0 ml/min
Pressure	2 bars
Gas	Air
Temperature	40° C

Analyzed by: LCBA 45000 Orleans FRANCE

**S.E.D.E.R.E.**  
PARC VOLTA - BP 27  
9, rue Parmentier  
94141 Alfortville Cedex FRANCE

Application #76