

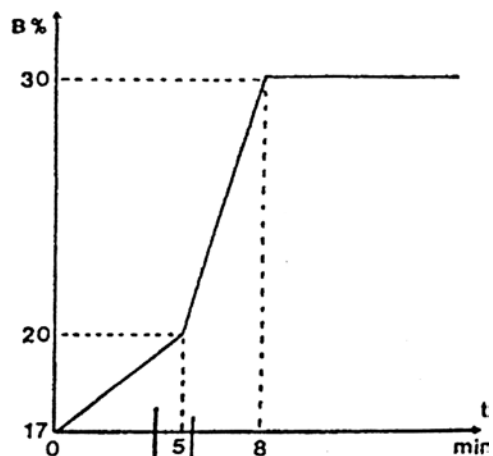
# SEDEX Low Temperature Evaporative Light Scattering Detector

**SAMPLE: MONO, DI, TRISACCHARIDES**

**HPLC**  
Gradient

**Peaks**

DR : Deoxyribose  
Rh : Rhamnose  
F : Fructose  
Ma: Mannose  
G : Glucose  
S : Sucrose  
Me: Mellibiose  
R : Raffinose



Gradient: Methanol 17-20 %, 0-5 min  
20-30%, 5-8 min  
Hold at 30 %

**CONDITIONS**

Column	<i>Lichrospher Diol</i> 250 x 4 mm
Eluent	A: $CH_2Cl_2$ B: Methanol
Flow Rate	1.0 ml/min
Pressure	2 bars
Gas	Air
Temperature	40° C

Analyzed by: LCBA 45000 Orleans FRANCE

**S.E.D.E.R.E.**  
PARC VOLTA - BP 27  
9, rue Parmentier  
94141 Alfortville Cedex FRANCE

**Application #77**