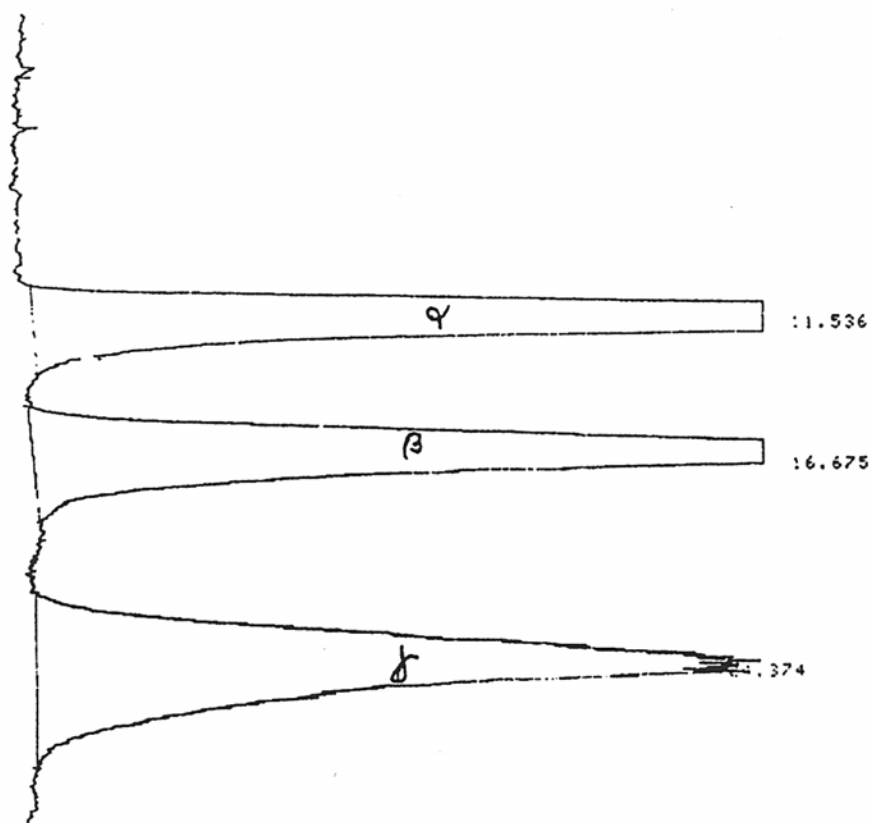


SEDEX Low Temperature Evaporative Light Scattering Detector

SAMPLE: α, β, γ - CYCLODEXTRINE

HPLC



CONDITIONS

Column	<i>Waters Carbohydrate 250 x 4.6 mm</i>
Injected Volume	<i>20 μl</i>
Eluent	<i>Acetonitrile/Water (80/20)</i>
Flow Rate	<i>1.5 ml/min</i>
Pressure	<i>1.5 bars</i>
Gas	<i>Helium</i>
Temperature	<i>50° C</i>

Analyzed by: CE Saclay Molecules Marquees 91191 Gif Sur Yvette FRANCE