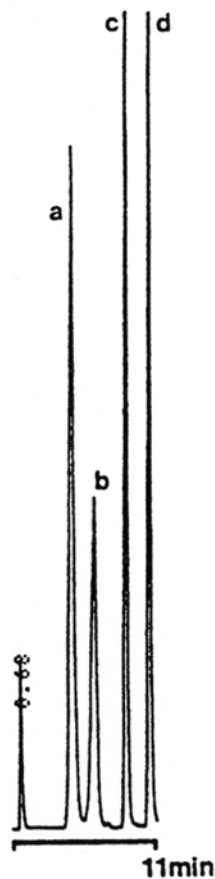


SEDEX Low Temperature Evaporative Light Scattering Detector

SAMPLE: SUGARS

SFC
Gradient

a: Fructose
b: Glucose
c: Saccharose
d: Raffinose



Gradient: 6 % B, 0-5 min
6-18 % B, 5-9 min
8 % B, 9-11 min

CONDITIONS

Column	<i>Lichrospher CN 1250 x 4 mm</i>
Eluent	<i>CO₂/MeOH</i>
Flow Rate	<i>2.8 ml/min</i>
Pressure	<i>3000 psi</i>
Temperature	<i>Detector 40° C, Column 45° C</i>

Analyzed By : LCBA 45100 Orleans FRANCE

S.E.D.E.R.E.
PARC VOLTA - BP 27
9, rue Parmentier
94141 Alfortville Cedex FRANCE

Application #10