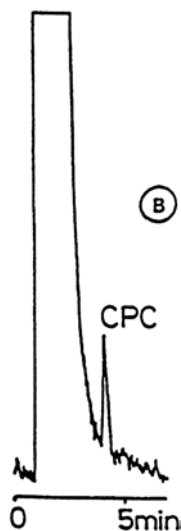
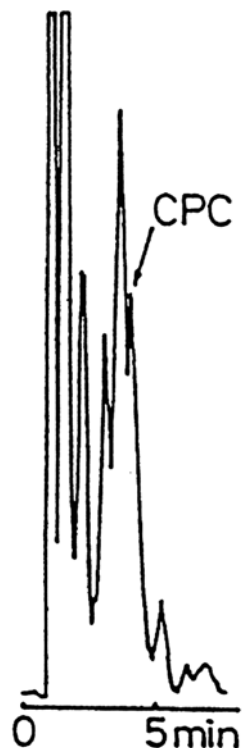


# SEDEX Low Temperature Evaporative Light Scattering Detector

## SAMPLE: CETYLPYRIDINIUM CHLORIDE (CPC) HPLC

Analysis of 100 ppm CPC in 8000 ppm of POE oil via buffered eluent

CONDITIONS	
Column	<i>Zorbax CN - 10 <math>\mu</math>m 150 x 4.6 mm</i>
Injected Volume	<i>20 <math>\mu</math>l (Injected Quantity 2 <math>\mu</math>g)</i>
Eluent	<i>MeOH/Triethylammonium Trifluoroacetate (0.01 M), pH = 4.2</i>
Flow Rate	<i>1.5 ml/min</i>
Gas	<i>Air</i>
Pressure	<i>2.5 Bars</i>
Temperature	<i>40<math>^{\circ}</math></i>



CONDITIONS	
Column	<i><math>\mu</math> Bondapak CN - 10 <math>\mu</math>m 150 x 4.6 mm</i>
Injected Volume	<i>20 <math>\mu</math>l (Injected Quantity 2 <math>\mu</math>g)</i>
Eluent	<i>MeOH/Triethylammonium Trifluoroacetate (0.01 M), pH = 4.2</i>
Flow Rate	<i>1.5 ml/min</i>
Gas	<i>Air</i>
Pressure	<i>2.5 Bars</i>
Temperature	<i>40<math>^{\circ}</math> C</i>

Analyzed By : LCBA 45100 Orleans FRANCE [J. Chromatogr. 513 (1990) 354]