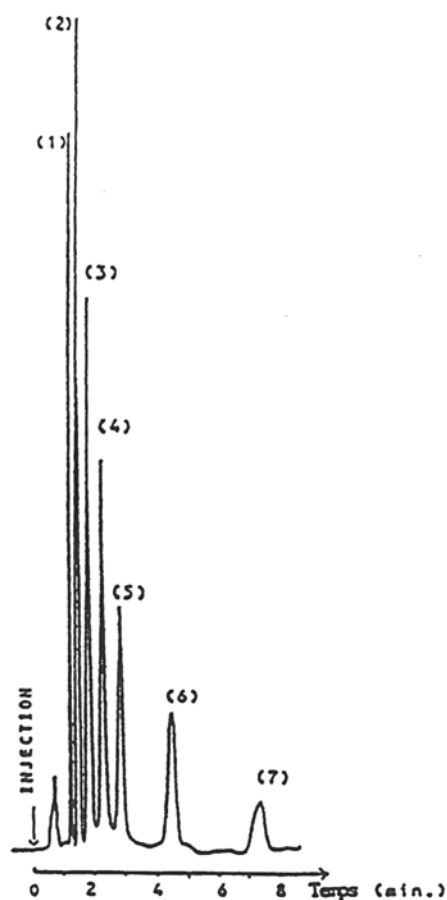


# SEDEX Low Temperature Evaporative Light Scattering Detector

## SAMPLE: ALIPHATIC ALCOHOLS

SFC

- 1: Tetradecanol (C<sub>14</sub>)
- 2: Hexadecanol (C<sub>16</sub>)
- 3: Octadecanol (C<sub>18</sub>)
- 4: Eicosanol (C<sub>20</sub>)
- 5: Docasanol (C<sub>22</sub>)
- 6: Hexacosanol (C<sub>26</sub>)
- 7: Triacontanol (C<sub>30</sub>)



### CONDITIONS

Column	Zorbax ODS 5-7 $\mu$ 15 x 4.6 mm
Injected Quantity	700 $\mu$ g/5 $\mu$ g of each alcohol except Tetradecanol
Eluent	CO <sub>2</sub> /Methanol (98.7/1.3)[w/w]
Flow Rate	5.6 ml/min
Pressure	290 Bars
Temperature	Detector: 30° C, Column 30° C

Analyzed by : ESPCI - FRANCE [Thesis D. Thiebault]