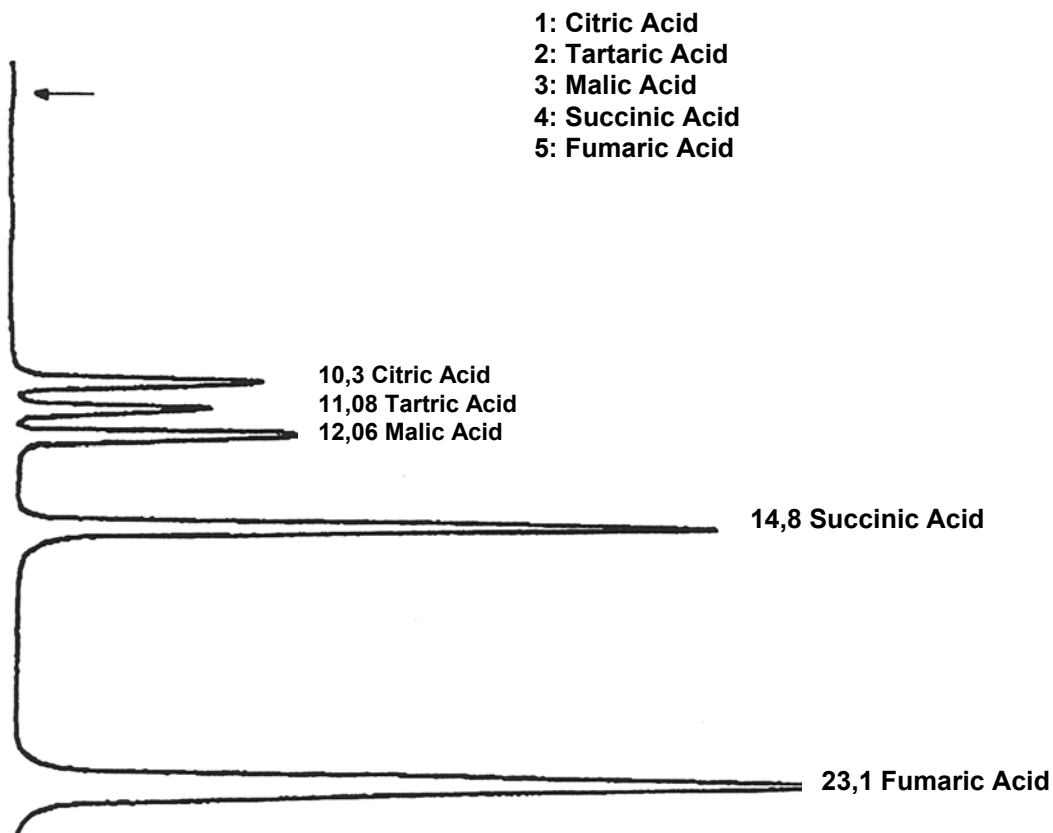


SEDEX Low Temperature Evaporative Light Scattering Detector

SAMPLE: DI-ACIDS

HPLC



CONDITIONS

Column	<i>Aminex HPX 87 H</i> <i>7.5 x 300 mm</i>
Injected Volume	<i>20 µl</i>
Eluent	<i>Water, CF₃COOH (1 x 10⁻²)</i>
Flow Rate	<i>0.6 ml/min</i>
Gas	<i>Air</i>
Temperature	<i>60 °C</i>

S.E.D.E.R.E.

PARC VOLTA - BP 27

9, rue Parmentier

94141 Alfortville Cedex FRANCE

Application #38