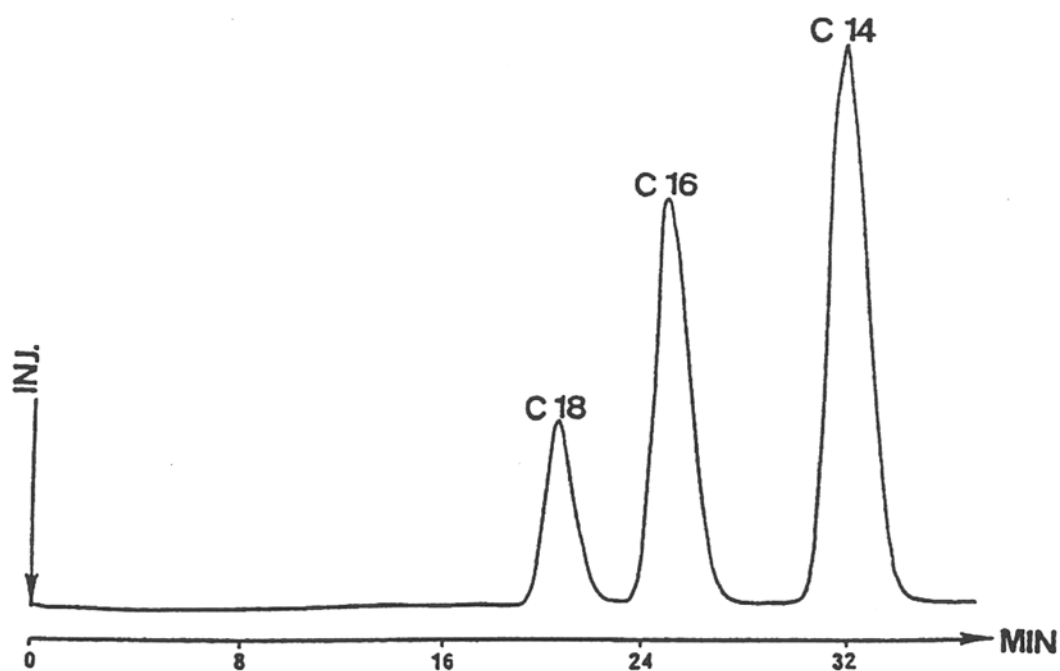


SEDEX Low Temperature Evaporative Light Scattering Detector

SAMPLE: FATTY ACIDS

CCC

(Counter Current Chromatography)



CONDITIONS

Solvent	<i>Heptane/Methanol/Acetic Acid (1/1/1)</i>
Injected Volume	<i>5 µl, Concentration = 1 g/l</i>
Eluent	<i>Heptane</i>
Flow Rate	<i>1 ml/min</i>
Speed Detection	<i>1850 RPM</i>
Gas	<i>Nitrogen, 2 Bars</i>
Temperature	<i>29° C</i>

Analyzed by : S. Drogue, MC Rolet, D Thibaut and R Rosset, ESPCI Paris FRANCE

S.E.D.E.R.E.
PARC VOLTA - BP 27
9, rue Parmentier
94141 Alfortville Cedex FRANCE

Application #48