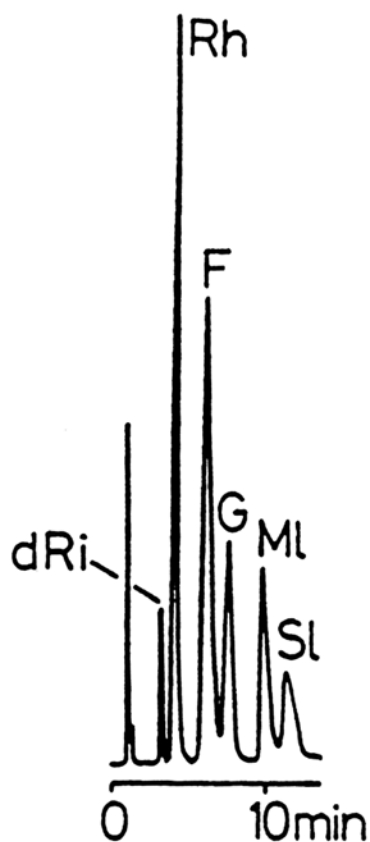


SEDEX Low Temperature Evaporative Light Scattering Detector

SAMPLE: SUGARS

SFC

RI : Deoxyribose
Rh : Ramnose
F : Fructose
MI : Mannose
SI : Sorbitol



CONDITIONS

Column	<i>RSIL NO₂</i> <i>250 x 4.6 mm</i>
Eluent	<i>CO₂/Methanol (87/13 [w/w])</i>
Flow Rate	<i>3.8 ml/min</i>
Pressure	<i>3,500 psi</i>
Temperature	<i>Detector: 40° C, Column: 40° C</i>

Analyzed by : LCBA 45100 Orleans France[J. Chromatogr. 555 (1990) 299]

S.E.D.E.R.E.
PARC VOLTA - BP 27
9, rue Parmentier
94141 Alfortville Cedex FRANCE

Application #50