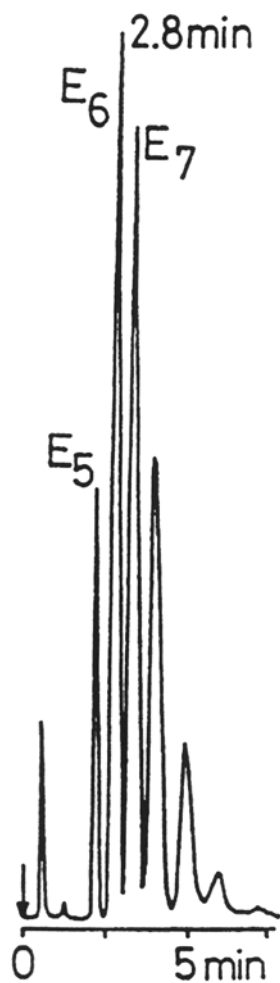


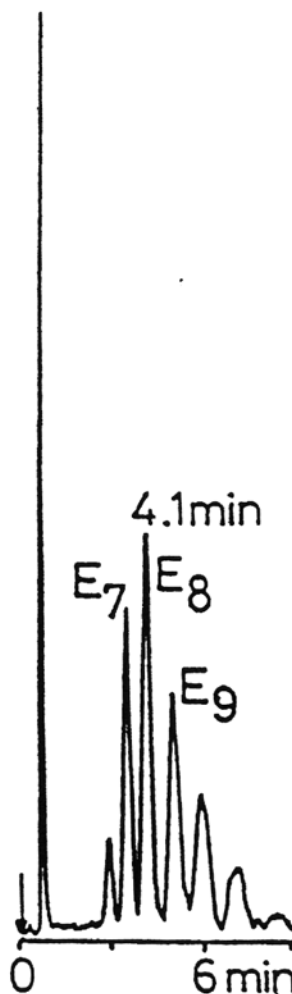
SEDEX Low Temperature Evaporative Light Scattering Detector

SAMPLE: POLYETHYLENE GLYCOL 300 AND 400

SFC



PEG 300



PEG 400

CONDITIONS

Column	<i>Lichrospher Diol</i> 125 x 4.6 mm
Eluent	CO ₂ /Methanol (95.2/4.8) [w/w]
Flow Rate	3.4 ml/min
Pressure	4,000 psi
Temperature	40° C

Analyzed by : LCBA 45100 Orleans FRANCE [J. Chromatogr. 505 (1990) 191]