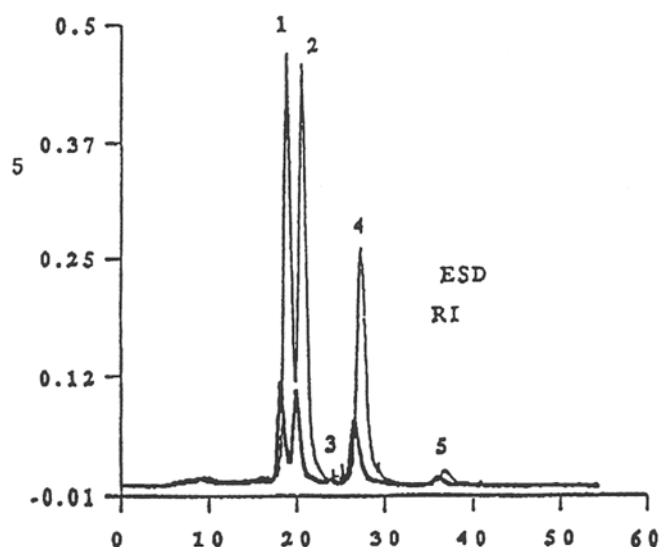


# SEDEX Low Temperature Evaporative Light Scattering Detector

SAMPLE: SUGARS (IN DOUGLAS FIR NEEDLES) HPLC

Simultaneous detection { SEDEX 45  
RI



Sugars and related Compounds*	Retention time E.S.D. (minutes)	Concentration (µmoles)
1 C6 Glucose	18.3	0.33
2 C6 (CH3) Pinitol*	20.1	0.27
3 --- Unknown	24.0	---
4 C6 Fructose	26.8	0.32
5 C6 Inositol	36.1	0.03

## CONDITIONS

Cartridge	<i>Polyspher CH-Pb 200 x 3 mm (Merck Ref. 51279).</i>
Column	<i>Polyspher CH-Pb 300 x 7.8 mm (Merck Ref. 51278).</i>
Injected Volume	<i>20 µl</i>
Eluent	<i>Water</i>
Flow Rate	<i>0.4 ml/min</i>
Temperature	<i>Column 80° C</i>
RI Detector	<i>Knauer (gamme 4)</i>
ELS Detector	<i>SEDEX 45, Gain 7, Temperature 45° C Pressure 3.5 bars</i>

Analyzed by : INRA-CNRF Champenoux 54820 Seichamps FRANCE