

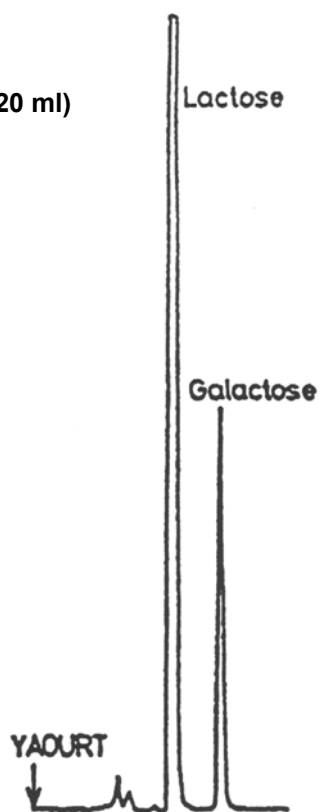
SEDEX Low Temperature Evaporative Light Scattering Detector

SAMPLE: SUGARS (IN MILK)

HPLC

Preparation :

- Dilute by Water $\frac{1}{2}$
- Shake then centrifuge
- Upper layer is dilute by Water $\frac{1}{2}$
- Flush 30 ml on cartridge mixed bed cham-prep (320 ml)
- Clean by 1 ml of Water
- Inject 25 ml



CONDITIONS

Column	<i>Sugar Pak Ca⁺²</i>
Injected Volume	<i>20 μl</i>
Eluent	<i>Water</i>
Flow Rate	<i>0.5 ml/min</i>
Pressure	<i>2.2 bars</i>
Temperature	<i>45^o C</i>

S.E.D.E.R.E.

PARC VOLTA - BP 27

9, rue Parmentier

94141 Alfortville Cedex FRANCE

Application #59