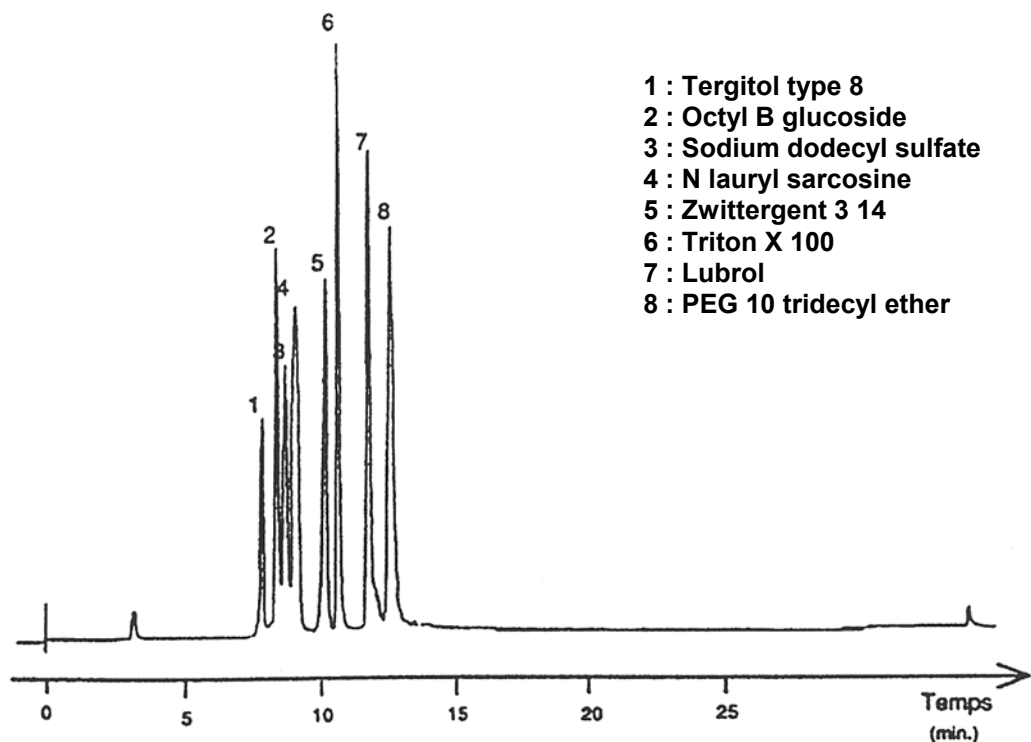


# SEDEX Low Temperature Evaporative Light Scattering Detector

**SAMPLE: DETERGENT**

**HPLC**  
Gradient



Gradient: 40-100 % Acetonitrile (3% min)

## CONDITIONS

|                 |                             |
|-----------------|-----------------------------|
| Cartridge       | C4 (Vydac)                  |
| Column          | C4 (Vydac)                  |
| Injected Volume | 20 $\mu$ l                  |
| Eluent          | A: Water<br>B: Acetonitrile |
| Flow Rate       | 1.0 ml/min                  |
| Pressure        | 2 bars                      |
| Gas             | Nitrogen                    |
| Temperature     | 40° C                       |

Analyzed by : Pasteur Merieux- R & D Laboratory 69280 Marcy L'Etoile FRANCE

**S.E.D.E.R.E.**  
PARC VOLTA - BP 27  
9, rue Parmentier  
94141 Alfortville Cedex FRANCE

**Application #61**