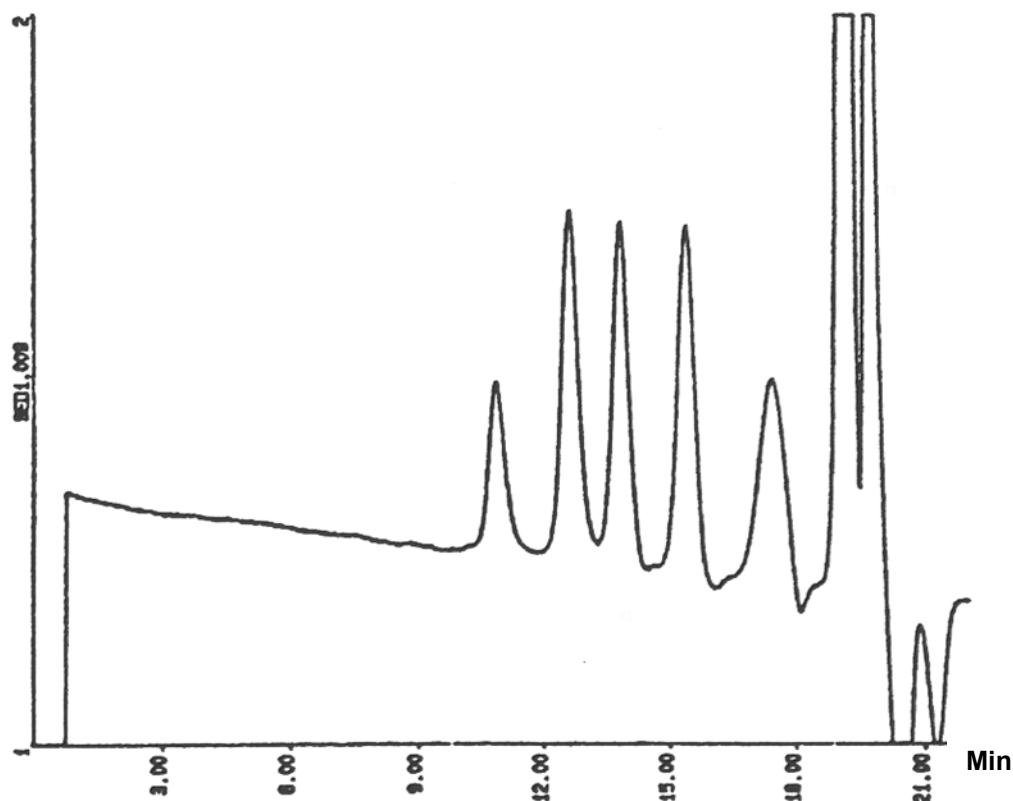


SEDEX Low Temperature Evaporative Light Scattering Detector

**SAMPLE: PL-EASICAL POLYSTYRENE
STANDARDS**

GPC



Via ELS detection, the S/N was 100 times better than with RI detection

CONDITIONS

| | |
|-----------------|---|
| Column | 2 x PL Gel 10 μ m/mixed B 300 x 7.5 mm |
| Injected Volume | 200 μ l (Concentration 0.1 %) |
| Eluent | THF (stabilized) |
| Flow Rate | 1.0 ml/min |
| Pressure | 2.5 bars |
| Gas | Air |
| Gain | 6 |
| Temperature | 40 ^o C |

Analyzed by : Polymer Laboratories, Church Stretton GREAT BRITAIN

S.E.D.E.R.E.
PARC VOLTA - BP 27
9, rue Parmentier
94141 Alfortville Cedex FRANCE

Application #64