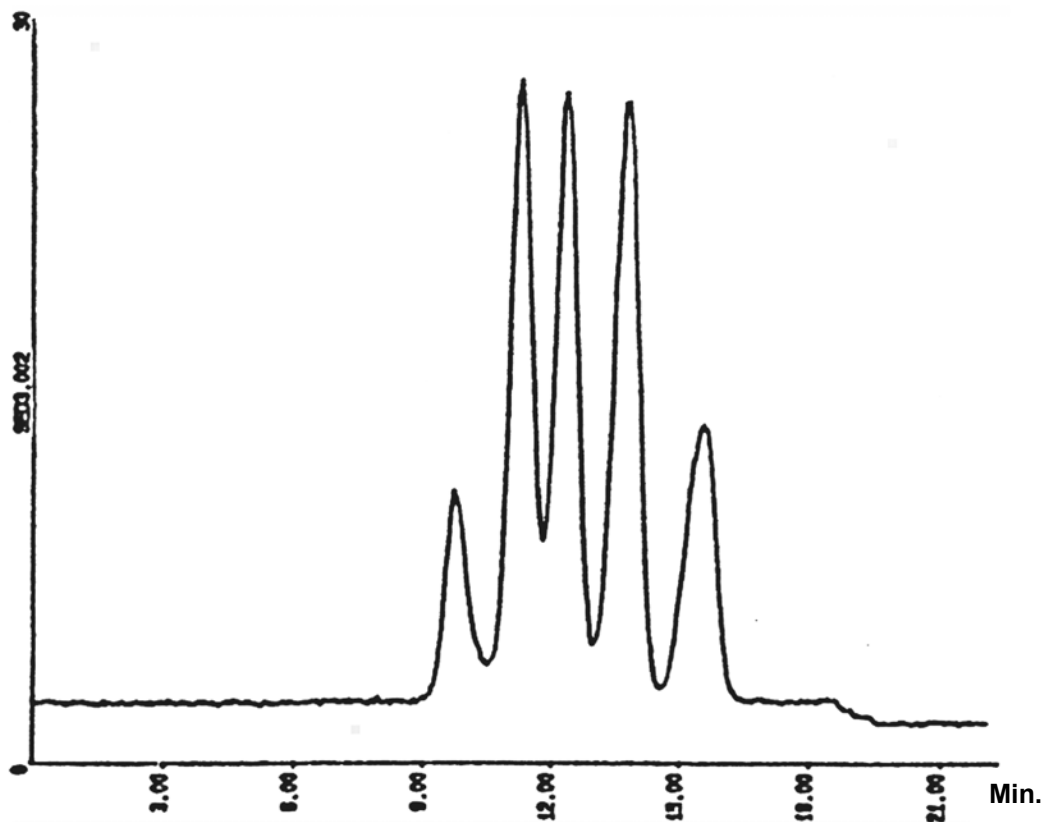


# SEDEX Low Temperature Evaporative Light Scattering Detector

**SAMPLE: PL-EASICAL POLYSTYRENE  
STANDARDS**

GPC

High Temperature



## CONDITIONS

Column	2 x PL Gel 10 $\mu$ m/mixed B 300 x 7.5 mm
Injected Volume	200 $\mu$ l (Concentration 0.1 %)
Eluent	TCB (1,2,4-Trichlorobenzene) + 0.05 % Santonox R
Flow Rate	1.0 ml/min
Pressure	2.5 bars
Gas	Air
Gain	6
Temperature	140 <sup>o</sup> C

Analyzed by : Polymer Laboratories, Church Stretton GREAT BRITAIN

**S.E.D.E.R.E.**  
PARC VOLTA - BP 27  
9, rue Parmentier  
94141 Alfortville Cedex FRANCE

Application #65