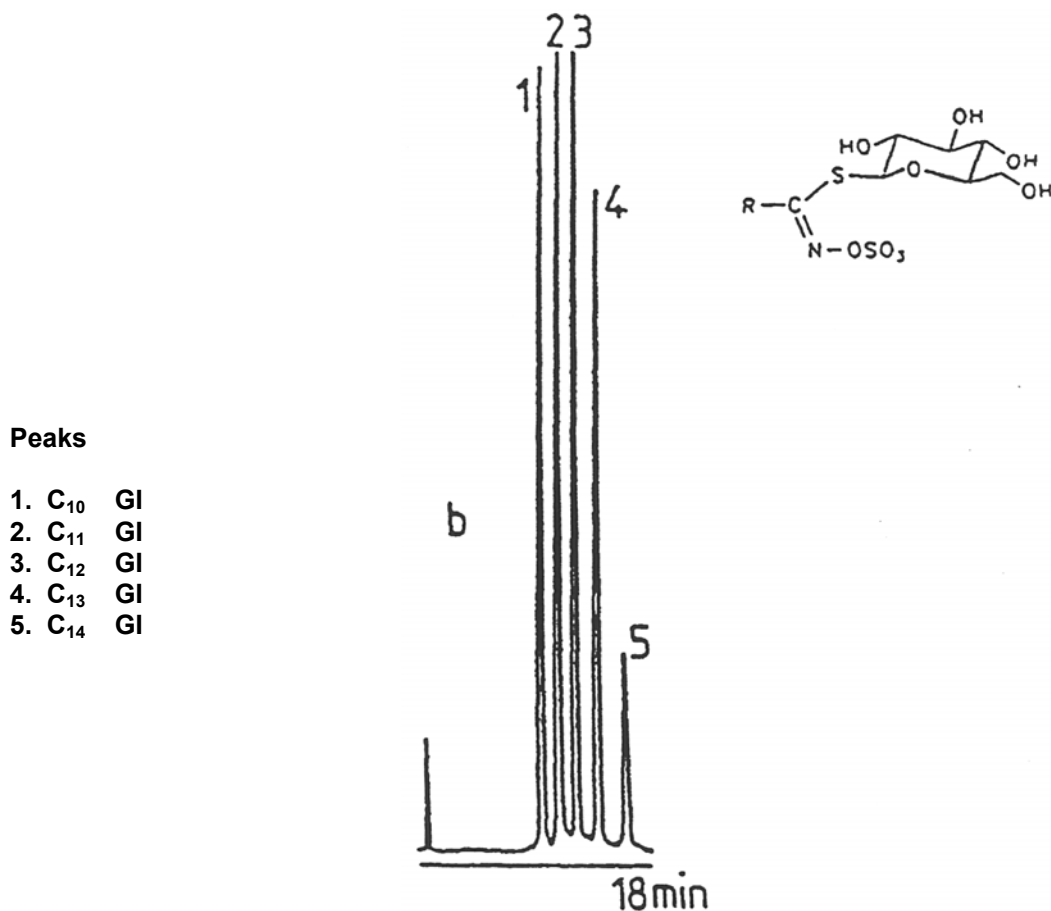


SEDEX Low Temperature Evaporative Light Scattering Detector

SAMPLE: ALKYL GLUCOSINOLATES (R-GI)

HPLC
Gradient



Gradient: Methanol, 40 to 75% in 10 min
Hold at 75% Methanol for 8 min.

CONDITIONS

Column	Lichrospher RP8 - 5 μ 100 x 4 mm
Injected Volume	20 μ l
Eluent	A: Acetonitrile B: Water
Flow Rate	1.0 ml/min
Pressure	2 bars
Gas	Air
Temperature	45° C

Analyzed by: LCBA 45000 Orleans FRANCE

S.E.D.E.R.E.
PARC VOLTA - BP 27
9, rue Parmentier
94141 Alfortville Cedex FRANCE

Application #73