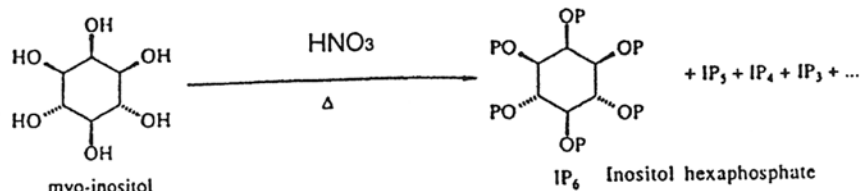


# SEDEX Low Temperature Evaporative Light Scattering Detector

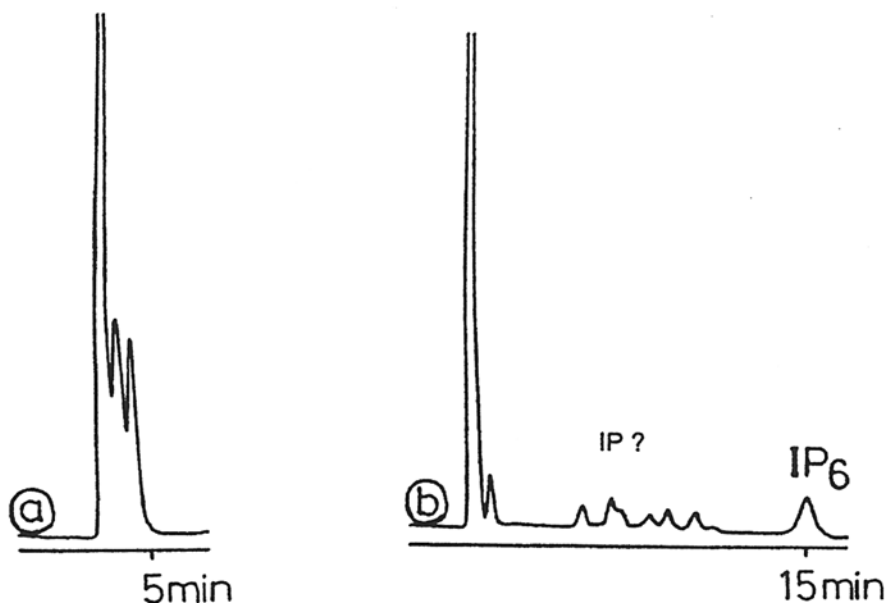
## SAMPLE: INOSITOL PHOSPHATE

HPLC  
Gradient



P = P(O)O<sub>2</sub><sup>-</sup>

IP<sub>3</sub>, IP<sub>4</sub> et IP<sub>5</sub>



**a:** Isocratic, 0.1 M HNO<sub>3</sub>  
**b:** Gradient, A: Water, B: 0.02 M HNO<sub>3</sub>  
 0 to 1 min 100 % B  
 1 to 2 min 70 % B  
 2 to 22 min 60 % B

### CONDITIONS

Column	IC-PAK-ANION 150 x 4.6 mm
Injected Volume	20 µl
Eluent	HNO <sub>3</sub>
Flow Rate	a) 0.5 ml/min, b) 0.6 ml/min
Pressure	2.0 bars
Gas	Air
Temperature	50° C

Analyzed by: LCBA 45000 Orleans FRANCE

**S.E.D.E.R.E.**  
 PARC VOLTA - BP 27  
 9, rue Parmentier  
 94141 Alfortville Cedex FRANCE

Application #80