

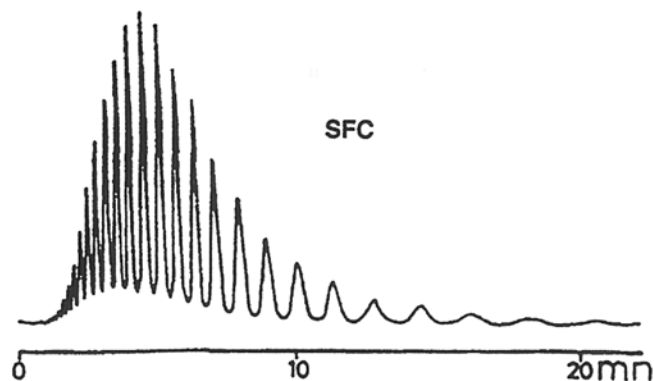
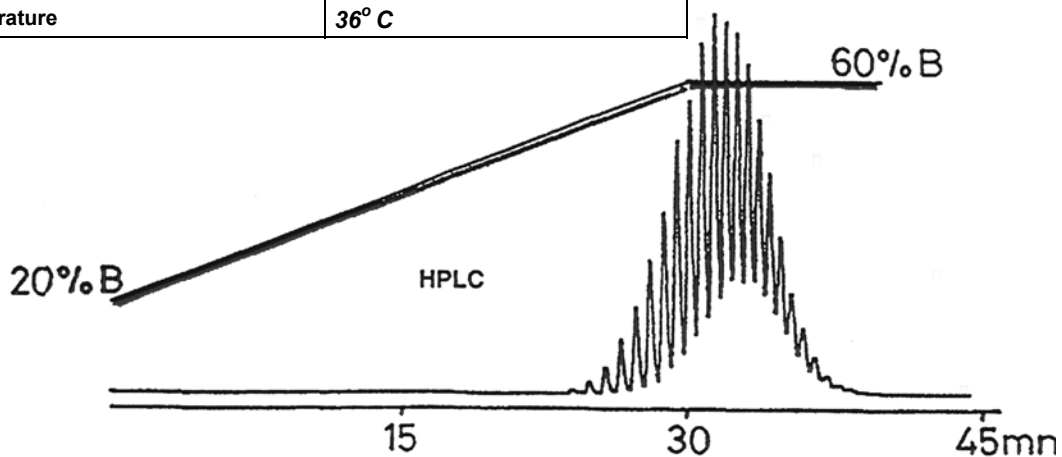
SEDEX Low Temperature Evaporative Light Scattering Detector

SAMPLE: POLYETHYLENE GLYCOL 1450

HPLC
SFC

CONDITIONS

Column	<i>Nucleosill C18 120-7</i> 250 x 4 mm
Eluent	A: Water/Methanol (95/5) B: Methanol/Water (95/5) (v/v)
Flow Rate	1.0 ml/min
Temperature	36° C



CONDITIONS

Column	<i>Pecosphere Silica</i> 30 x 36 mm
Injected Volume	20 µl
Eluent	CO ₂ /Methanol/Et ₃ N (79.8/18/9/0.1)
Flow Rate	5 ml/min
Pressure	235 bars
Temperature	45° C

Analyzed by: LCBA 45000 Orleans FRANCE