

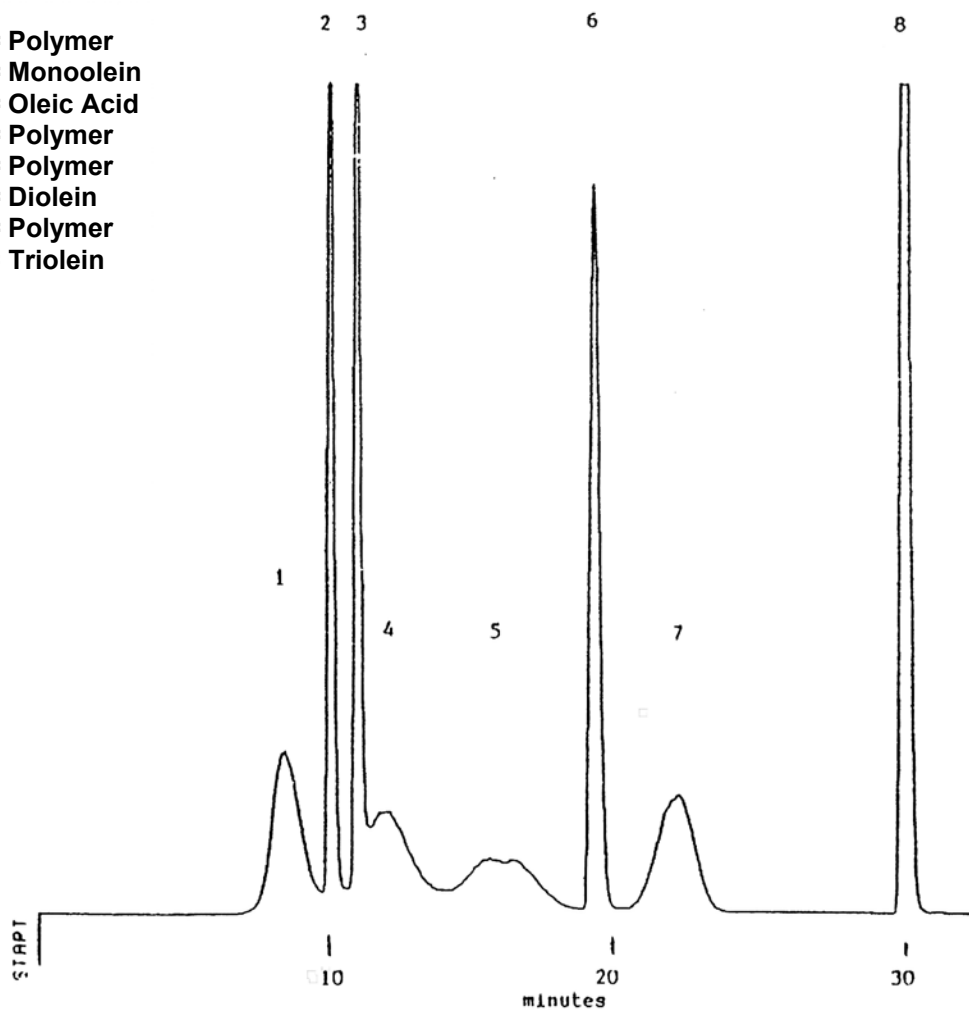
# SEDEX Low Temperature Evaporative Light Scattering Detector

## SAMPLE: OLEINS

HPLC

Gradient

- 1 = Polymer
- 2 = Monoolein
- 3 = Oleic Acid
- 4 = Polymer
- 5 = Polymer
- 6 = Diolein
- 7 = Polymer
- 8 = Triolein



Gradient : 72:20:8 to 0:60:40 in 5 min.  
Hold 25 min.

### CONDITIONS

Column	<i>Kromasil ODS, 100A, 5 <math>\mu</math></i> <i>(250 x 4.6 mm)</i>
Injected sample	<i>200 <math>\mu</math>g</i>
Eluent	<i>A : 0.1% Aqueous TFA</i> <i>B : Methanol</i> <i>C : Acetone</i>
Flow Rate	<i>1 ml/min</i>
Pressure	<i>2.2 bars</i>
Gas	<i>Nitrogen</i>
Temperature	<i>45° C</i>

Analyzed By : Richard Scientific, Novato CA 94949 USA

**S.E.D.E.R.E.**  
PARC VOLTA - BP 27  
9, rue Parmentier  
94141 Alfortville Cedex FRANCE

Application #99