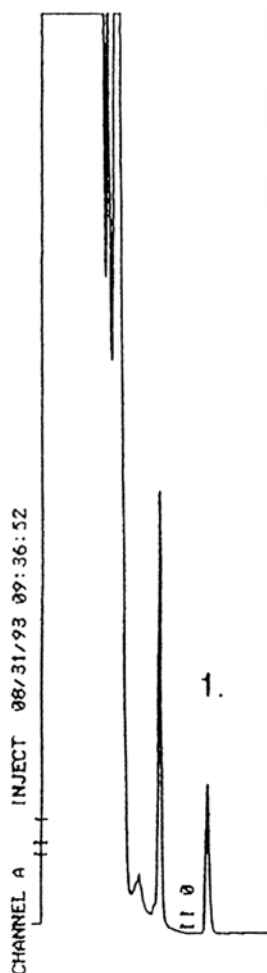


SEDEX Low Temperature Evaporative Light Scattering Detector

SAMPLE: CETRIMIDE

HPLC

**ALKYLTRIMETHYLAMMONIUM BROMIDE
(Predominantly C₁₄)**



Gradient : 20% B to 80% B in 15 min.

CONDITIONS

Column	<i>Beckman CN, 5 μm (150 x 4.6 mm)</i>
Injected sample	<i>20 μl (50 ng/μl in formulation)</i>
Eluent	<i>A : 0.1% TFA (aqueous) B : Acetonitrile</i>
Flow Rate	<i>2 ml/min</i>
Pressure	<i>2.3 bars</i>
Gas	<i>Nitrogen</i>
Temperature	<i>55° C</i>

Analyzed By : Richard Scientific, Novato CA 94949 USA

S.E.D.E.R.E.
PARC VOLTA - BP 27
9, rue Parmentier
94141 Alfortville Cedex FRANCE

Application #103