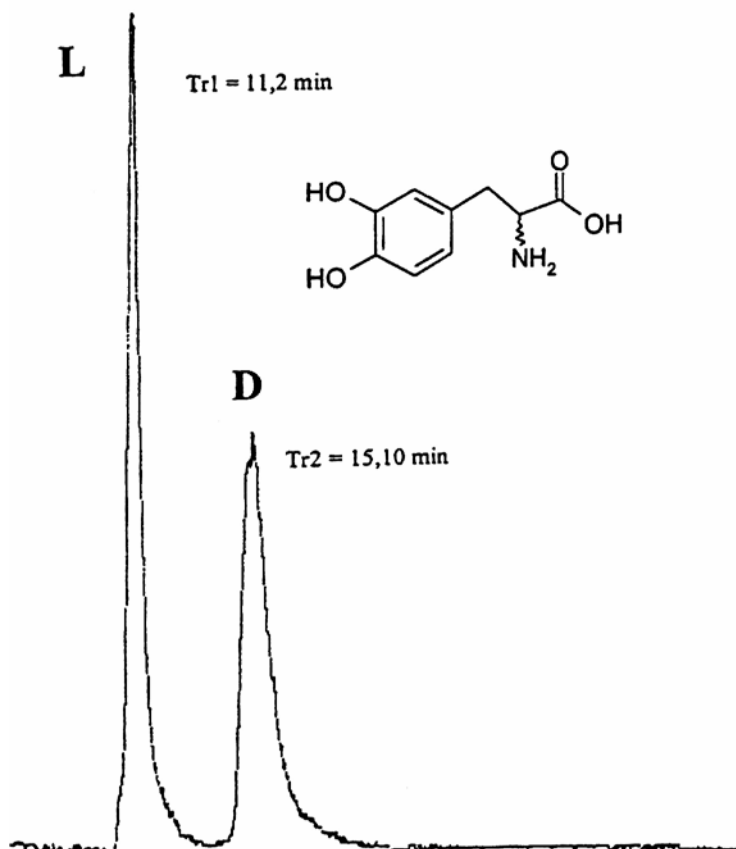


SEDEX Low Temperature Evaporative Light Scattering Detector

SAMPLE: DIHYDROPHENYLALANINE (DOPA) HPLC
AMINO-ACID Direct Enantiomeric Separation



$K'_1 = 1.06$
 $K'_2 = 2.53$

$\alpha = 2.38$
 $R_s = 3.3$

CONDITIONS

Column	<i>Chirobiotic T 250 x 4.6 mm</i>
Injected volume	<i>5 μl (1.5 ml)</i>
mobile phase	<i>Acetonitrile / Water 80/20</i>
Flow rate	<i>1 ml/min</i>
Gas	<i>Air</i>
Gain	<i>11</i>
Temperature	<i>25°C</i>

Analyzed by : CEA SACLAY – Service des molécules marquées – 91191 GIF/YVETTE CEDEX FRANCE

S.E.D.E.R.E.
PARC VOLTA - BP 27
9, rue Parmentier
94141 Alfortville Cedex FRANCE

Application#126