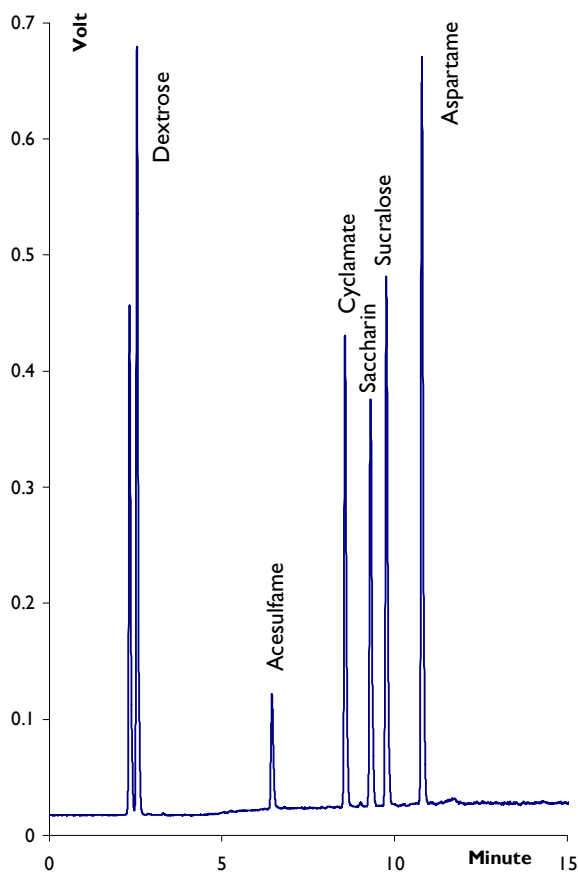


SEDEX Low Temperature Evaporative Light Scattering Detector

SAMPLE: Sweeteners

HPLC _{0g}



CONDITIONS

Column	<i>Shandon C18 - 5 μm 250 x 4.6 mm</i>
Injected Volume	<i>10 μl - 100 ppm each</i>
Eluent	<i>Gradient: MeCN+0.1 %TFA / Water+0.1 %TFA from 98:2 to 60:40 in 15 minutes</i>
Flow Rate	<i>1.0 ml/min</i>
Pressure	<i>3.5 bars</i>
Gas	<i>Nitrogen</i>
Temperature	<i>40° C</i>

Analyzed by: C. FRANCOIS - SEDERE

S.E.D.E.R.E.

PARC VOLTA - BP 27

9, rue Parmentier

94141 Alfortville Cedex FRANCE

Application #144